

Portobello America

fusion

Color Body Glazed Porcelain Tile



Silver

An authentic coating proposal. A blend of cement and fabric.
A contemporary interpretation, fusing the strength of concrete with
the warmth of fabric, Fusion presents an urban pantone with 6 colors.

fusion

Color Body Glazed Porcelain Tile

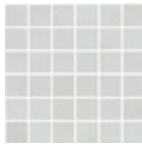
Chalk | V2



12x24 NAT PRESSED
12x24 NAT RECT
24x48 NAT RECT

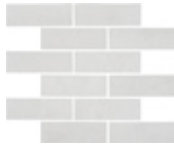
Single Bullnose
3x12 NAT RECT

Chalk 2x2 Mosaic Square



12x12 NAT TEL

Chalk 2x6 Mosaic Interlocking *



12x14 NAT TEL

Silver | V2



12x24 NAT PRESSED
12x24 NAT RECT
24x48 NAT RECT

Single Bullnose
3x12 NAT RECT

Silver 2x2 Mosaic Square



12x12 NAT TEL

Silver 2x6 Mosaic Interlocking *



12x14 NAT TEL

Sand | V2



12x24 NAT PRESSED
12x24 NAT RECT
24x48 NAT RECT

Single Bullnose
3x12 NAT RECT

Sand 2x2 Mosaic Square



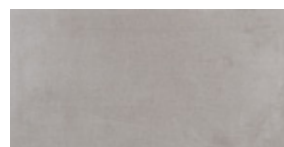
12x12 NAT TEL

Sand 2x6 Mosaic Interlocking *



12x14 NAT TEL

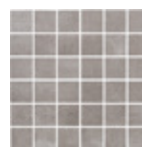
Graphite | V2



12x24 NAT PRESSED

Single Bullnose
3x12 NAT RECT

Graphite 2x2 Mosaic Square



12x12 NAT TEL

Graphite 2x6 Mosaic Interlocking *



12x14 NAT TEL

Greige | V2



12x24 NAT PRESSED
12x24 NAT RECT
24x48 NAT RECT

Single Bullnose
3x12 NAT RECT

Greige 2x2 Mosaic Square



12x12 NAT TEL

Greige 2x6 Mosaic Interlocking *



12x14 NAT TEL

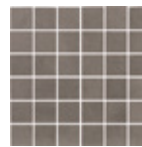
Carbon | V2



12x24 NAT PRESSED

Single Bullnose
3x12 NAT RECT

Carbon 2x2 Mosaic Square



12x12 NAT TEL

Carbon 2x6 Mosaic Interlocking *



12x14 NAT TEL

* Special Order

TECH DATA

Finish	Freeze Resistant	Shade Variation	Color Body	Water Absorption	Stain Resistant	DCOF AcuTest	Chemical Resistant	Breaking Strength	Mohs Hardness
NAT	Resistant	V2	YES	≤ 0.5%	Class A	≥ 0.60	Class A	≥ 275 lbf	7

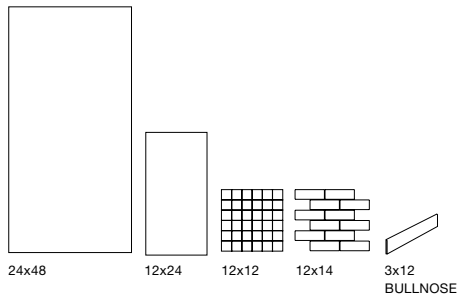
AREAS OF USAGE

Classification	Reference Category	Suitable
Interior, Dry	ID	✓
Interior, Wet	IW	✓
Interior, Wet Plus	IW+	✓
Exterior, Wet	EW	
Oils/Greases	O/G	

GROUT JOINT

The recommended grout joint:	
1/8" RECT	3/16" PRESSED

FORMATS



MORE INFO:

Portobello America
8701 Ditty Rd, Baxter, TN 38544

General Inquiries:
info@portobelloamerica.com
Phone: 931-650-5225



Sand