

# Portobello America

loom  
Glazed Ceramic Tile



Linen

Loom transforms color into a tactile design experience. Through ceramic innovation, its relief surface achieves a matte finish with a soft, woven-like sensorial effect, while Warp introduces a quieter plain option that gives compositions space to breathe. Together, in vibrant 6x6 and 2x10 formats designed for mix-and-match use across the portfolio, they turn color into a tool for contrast, rhythm, and expressive surface design.

# loom

Glazed Ceramic Tile

## Linen | V1



06x06 MATTE PRESSED



02x10 MATTE PRESSED

## Linen Warp | V1



02x10 MATTE PRESSED

## Ecrú | V1



06x06 MATTE PRESSED



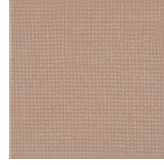
02x10 MATTE PRESSED

## Ecrú Warp | V1



02x10 MATTE PRESSED

## Camel | V1



06x06 MATTE PRESSED



02x10 MATTE PRESSED

## Camel Warp | V1



02x10 MATTE PRESSED

## Umber | V1



06x06 MATTE PRESSED



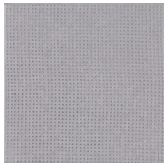
02x10 MATTE PRESSED

## Umber Warp | V1



02x10 MATTE PRESSED

## Ash | V1



06x06 MATTE PRESSED



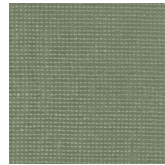
02x10 MATTE PRESSED

## Ash Warp | V1

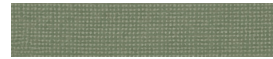


02x10 MATTE PRESSED

## Sage | V1



06x06 MATTE PRESSED



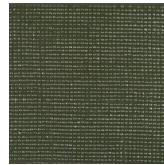
02x10 MATTE PRESSED

## Sage Warp | V1



02x10 MATTE PRESSED

## Forest | V1



06x06 MATTE PRESSED



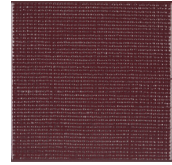
02x10 MATTE PRESSED

## Forest Warp | V1



02x10 MATTE PRESSED

## Merlot | V1



06x06 MATTE PRESSED



02x10 MATTE PRESSED

## Merlot Warp | V1



02x10 MATTE PRESSED

## TECH DATA

Finish	Freeze Resistant	Shade Variation	Color Body	Water Absorption	Stain Resistant	DCOF AcuTest	Chemical Resistant	Breaking Strength	Mohs Hardness
MATTE	Not Resistant	V1	NO	≤7%	Class C	N/A	Class A	≥ 275 lbf	6

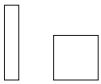
## AREAS OF USAGE

GLOSSY MATTE	Interior wall use recommended.
--------------	--------------------------------

## GROUT JOINT

The recommended grout joint:	3/6 PRESSED
------------------------------	-------------

## FORMATS



02x10 06x06

## MORE INFO:

**Portobello America**  
8701 Ditty Rd, Baxter, TN 38544

**General Inquiries:**  
info@portobelloamerica.com  
Phone: 931-650-5225



Loom Collection